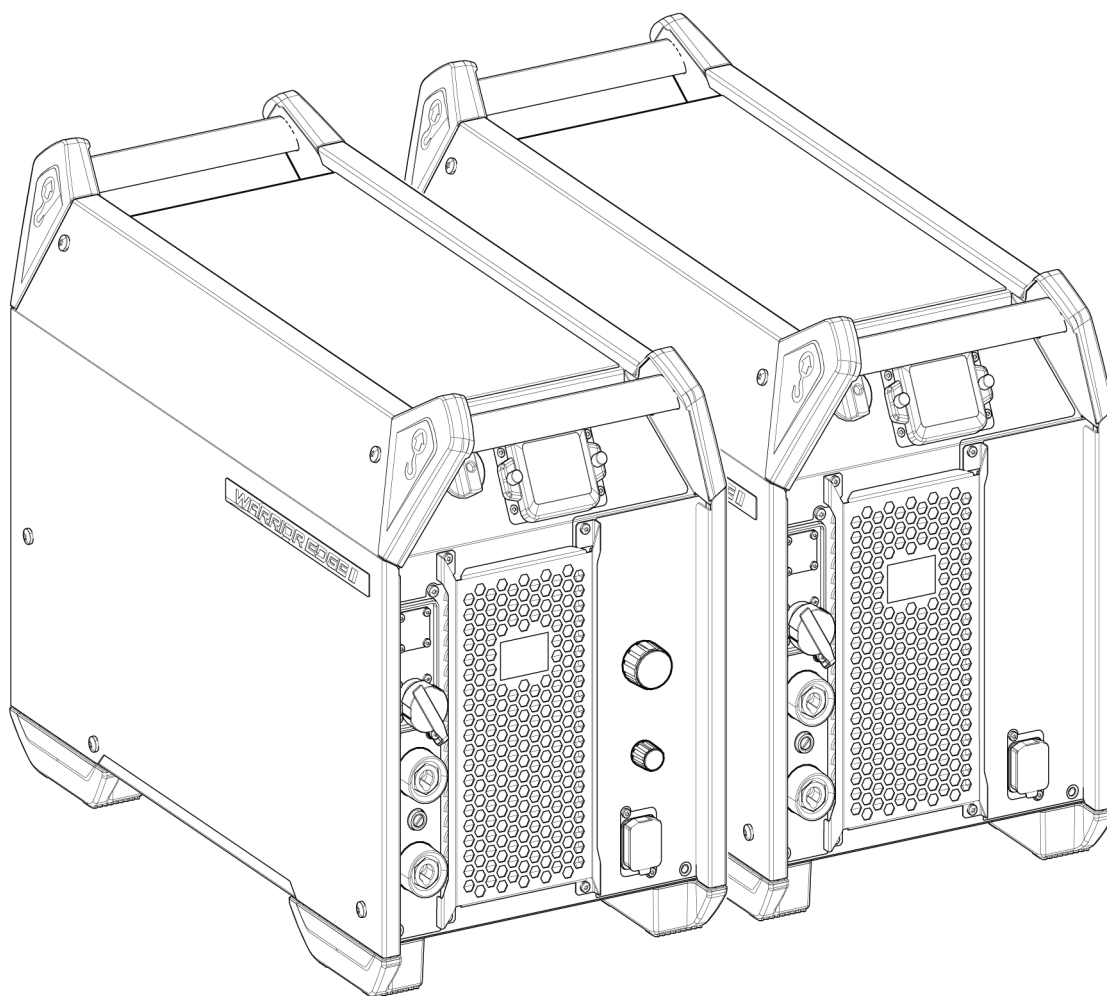


Warrior Edge 500 CX



Spare parts list

Ordering no.	Denomination	Notes
0448 500 880	Warrior Edge 500 CXI	Includes Pulse. 380-460 V, optional cooler, CE
0448 500 881	Warrior Edge 500 CXII	Includes Pulse, SPEED. 380- 460 V, optional cooler, CE
0448 500 883	Warrior Edge 500 CXI	Includes Pulse. 380-575 V, optional cooler, CSA
0448 500 884	Warrior Edge 500 CXII	Includes Pulse, SPEED. 380-575 V, optional cooler, CSA
0448 500 886	Warrior Edge 500 CXII	Includes Pulse, SPEED 380-460 V, optional cooler, AUS
0448 500 887	Warrior Edge 500 CXII	Includes Pulse, SPEED 380-460 V, optional cooler, CCC
0448 517 *	Instruction manual CE	
0448 518 *	Instruction manual CSA	
0463 844 001	Service manual	
0448 521 001	Spare parts list	

Spare parts may be ordered through your nearest ESAB dealer, see esab.com. When ordering, please state product type, serial number, denominations and ordering numbers according to the spare parts list. This facilitates dispatch and ensures correct delivery.

Maintenance and repair work should be performed by an experienced person, and electrical work only by a trained electrician. Use only recommended spare parts.

For accessories to the product, see the instruction manual.

The three last digits in the document number of the manual show the version of the manual. Therefore they are replaced with * here. Make sure to use a manual with a serial number or software version that corresponds with the product, see the front page of the manual.

TABLE OF CONTENTS

1 SPARE PARTS 4

1.1 Housing module 4

1.2 Input module 6

1.3 Primary module 7

1.4 Transformer module 9

1.5 Secondary module current brake 11

1.6 Secondary inductor module 13

1.7 Secondary connection module 15

1.8 User interface module CE 17

1.9 User interface module CSA 18

1.10 IPS module 20

1.11 Control module 22

1.12 IoT module 24

1.13 Market specific module 26

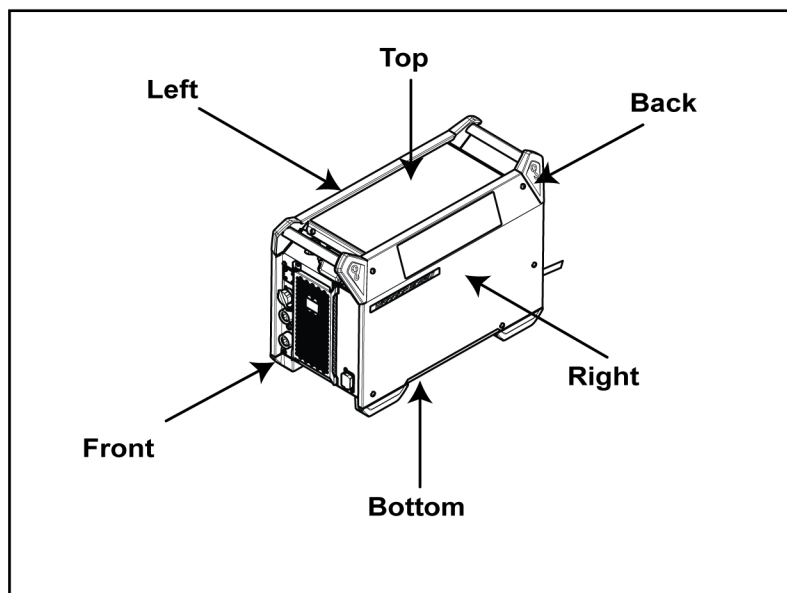
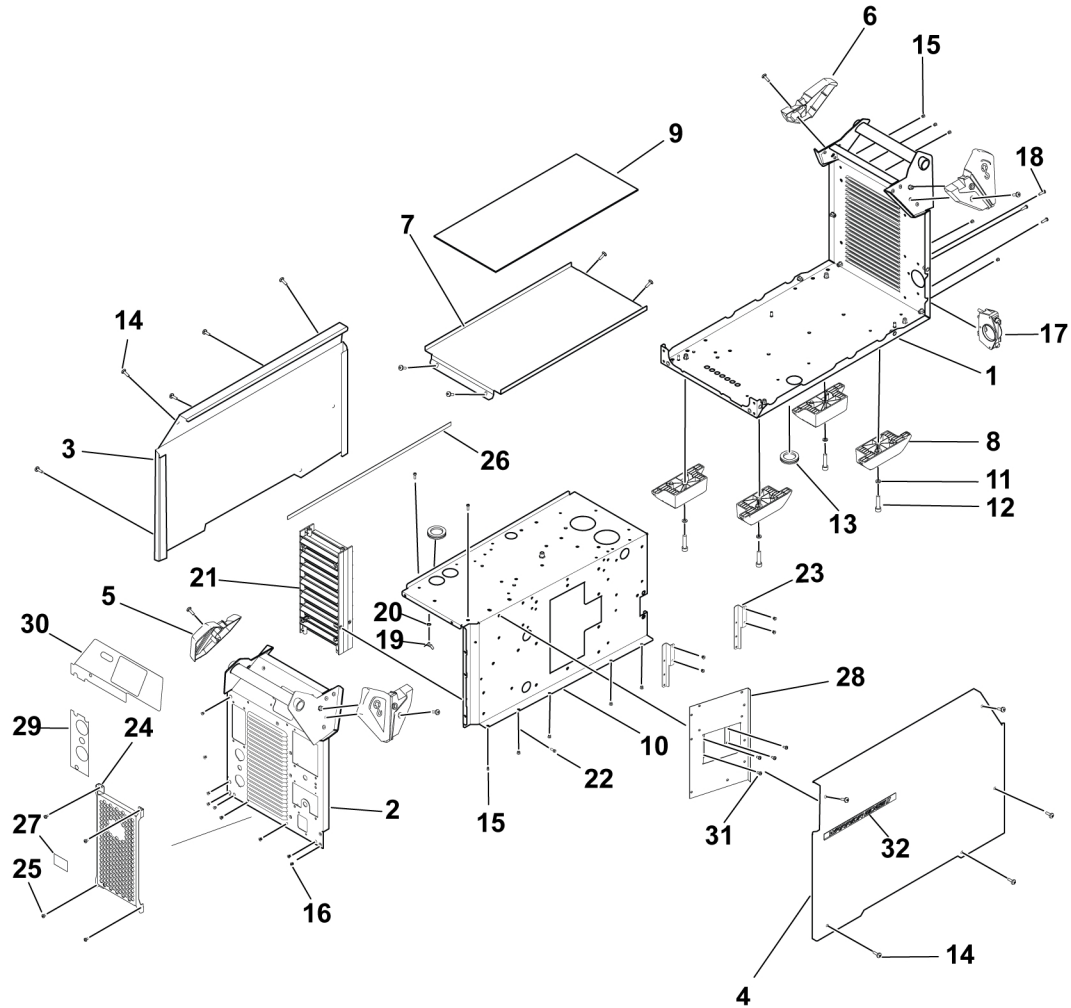
1 SPARE PARTS

1.1 Housing module

C = Component designation in the circuit diagram					
Item	Qty	Ordering no.	Denomination	Notes	C
1	1		Rear and Base panel	with handle	
2	1	0447 970 880	Front	with handle	
3	1	0465 375 882	Side panel	left	
4	1	0446 537 883	Side panel	right	
5	2	0465 293 001	Handle corner part		
6	2	0465 293 002	Handle corner part	mirrored	
7	1	0465 196 001	Top panel		
8	4	0465 415 001	Foot	PS1	
9	1	0465 331 001	Rubber mat		
10	1		Intermediate plate		
11	4		Screw	IN6, M6 x 30	
12	4		Washer	BRB 6,4 FZB	
13	2	0194 069 003	Grommet		
14	18		Screw	MRT M6 x 16	
15	14		Blind rivets	D4 x 8	
16	9		Blind rivet countersunk	D4 x 8	
17	1	0469 950 880	Cable clamp	LHF	
18	3		Screw	rx-pt 8-16 x 20	
19	1		Rivet	with flat pin	
20	1		Washer	AZ 5,3	
21	1	0465 367 880	Louver	Front IP, assembly	
22	3		Screw	REMFORM TORX 5 x 16	
23	2	0465 643 001	Power PCB bracket		
24	1	0447 969 001	Louver plate		
25	4		Screw		
26	0.545 m		Sealing strip	MRT M4 x 6	
27	1		Logo decal	L>545	
28	1	0446 720 880	Bracket control PCB		
29	1		OKC connector overlay	See item 101	
30	1		Main switch overlay	See item 101	
31	4		Screw	MRT M4 x 8	
32	2		Warrior EDGE emblem		

1 SPARE PARTS

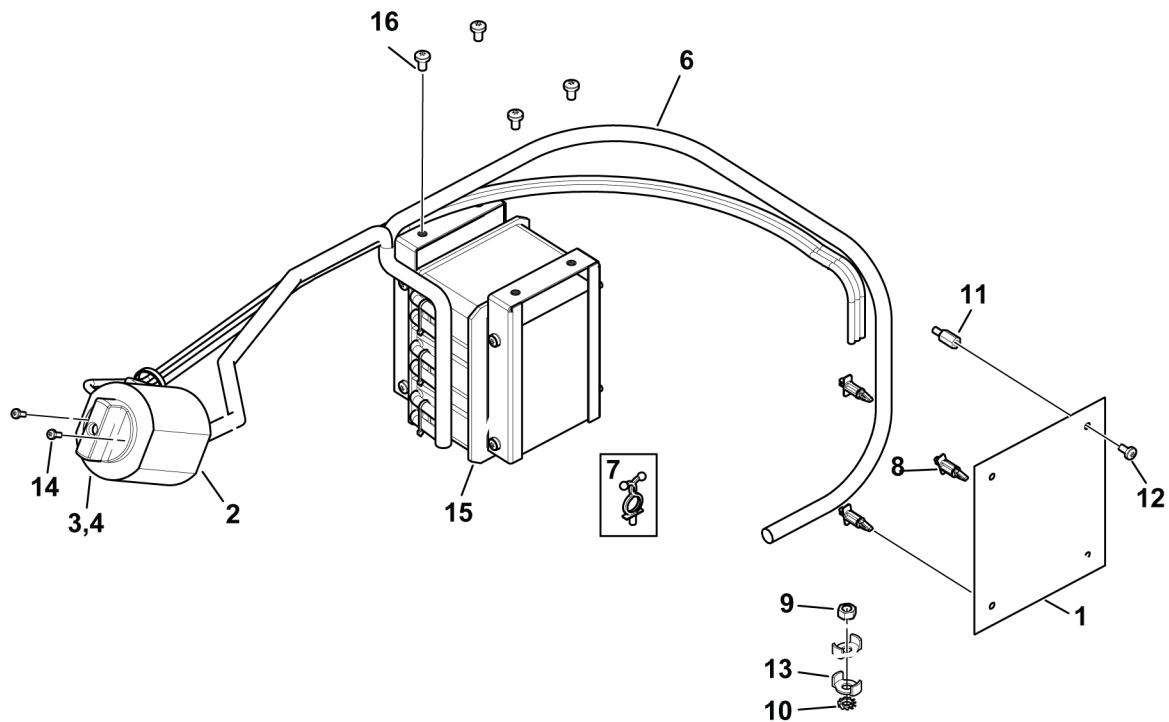
Item	Ordering no.	Description	Notes
101	0464 751 068	Overlay kit	Including item 29 and 30



1.2 Input module

C = Component designation in the circuit diagram					
Item	Qty	Ordering no.	Denomination	Notes	C
1	1	0440 018 880	Filter PCB		2AP1
2	1		Mains switch	See item 201	
3	1		Mains switch knob	See item 201	
4	1		Mains switch gasket	See item 201	
6	1	0465 318 881	Main switch harness		
7	5		Cable saddle		
8	3		Spacer	12.7 mm	
9	1		Nut	M6M M6 -8.8 FZB	
10	1		Washer	AZ 6,4	
11	1		Spacer screw	M4 x 12	
12	1		Screw MRT	M4 x 8	
13	2	0264 300 404	Washer for cable	KB 6,5	
14	2		Screw	MRT M3 x 8, See item 201	
15	1	0446 333 001	Primary inductor 40V 60%		3L1
16	4		Screw	MRT M5 x 8 -8.8 FZB	

Item	Ordering no.	Description	Notes
201	A000 101 478	Main switch kit	Including items 2,3,4 and 14



1.3 Primary module

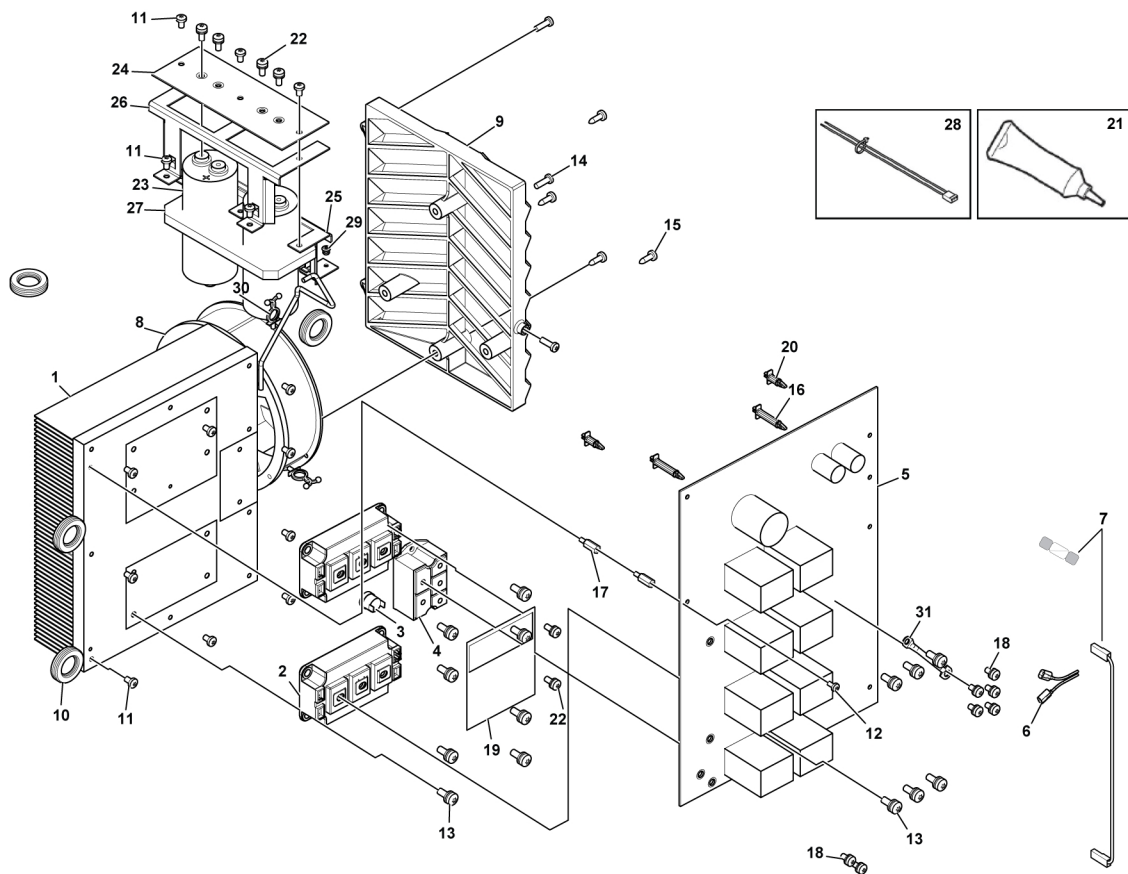
C = Component designation in the circuit diagram					
Item	Qty	Ordering no.	Denomination	Notes	C
1	1	0465 208 001	Heat sink primary side		
2	2		IGBT module	See item 301	15PM1, 15PM2
3	1	0465 421 880	Thermo protection cable		
4	1		Rectifier bridge	SKD 82/16, see item 302	15BR1
5	1	0440 003 888	PCBA Powerboard		15AP1
6	1	0465 313 880	Gate drive harness IGBT -PCB		
7	1	0464 752 720	Main voltage selection cable with fuse	See item 301	
8	1	0465 344 001	Fan assembly with contact	D170	15EV1
9	1	0465 332 001	Fan louver bracket rear		
10	4	0194 069 002	Grommet	27 mm	
11	14		Screw	MRT M5×8 -8.8 FZB	
12	1		Screw	MRT M4×8 -8.8 FZB	
13	14		Screw	MRT- Combi M6×16 -8.8 FZB, see item 301	
14	3	0194 153 330	Screw	Remform torx 5×16 black	
15	4		Screw	RTS ST 4.8×16 (self-tapping) FZB	
16	4		Plastic tower	LCBS-18-19 28.6mm	
17	2		Spacer screw	M4×15	
18	7		Screw	MRT- Combi M5× 10 -8.8 FZB	
19	1		Thermal protection insulation	See item 301	
20	2		Spacer LCBS	8R	
21	0.002 kg		Thermal compound	See item 301 and 302 (Apply on surfaces)	
22	6		Screw	MRT- Combi M5×12 -8.8 FZB, see item 302	
23	2	0462 178 004	Power capacitor 2200µF, 450V	Only for CE, AUS, CCC versions	15C1, 15C2, 15C3
23	2	0462 178 002	Capacitor 1500µF, 500V	Only for CSA (NA) versions	15C1, 15C2, 15C3
24	1	0440 370 881	Capacitor board		15AP4
25	1	0446 208 001	Capacitor bracket 1		

1 SPARE PARTS

C = Component designation in the circuit diagram

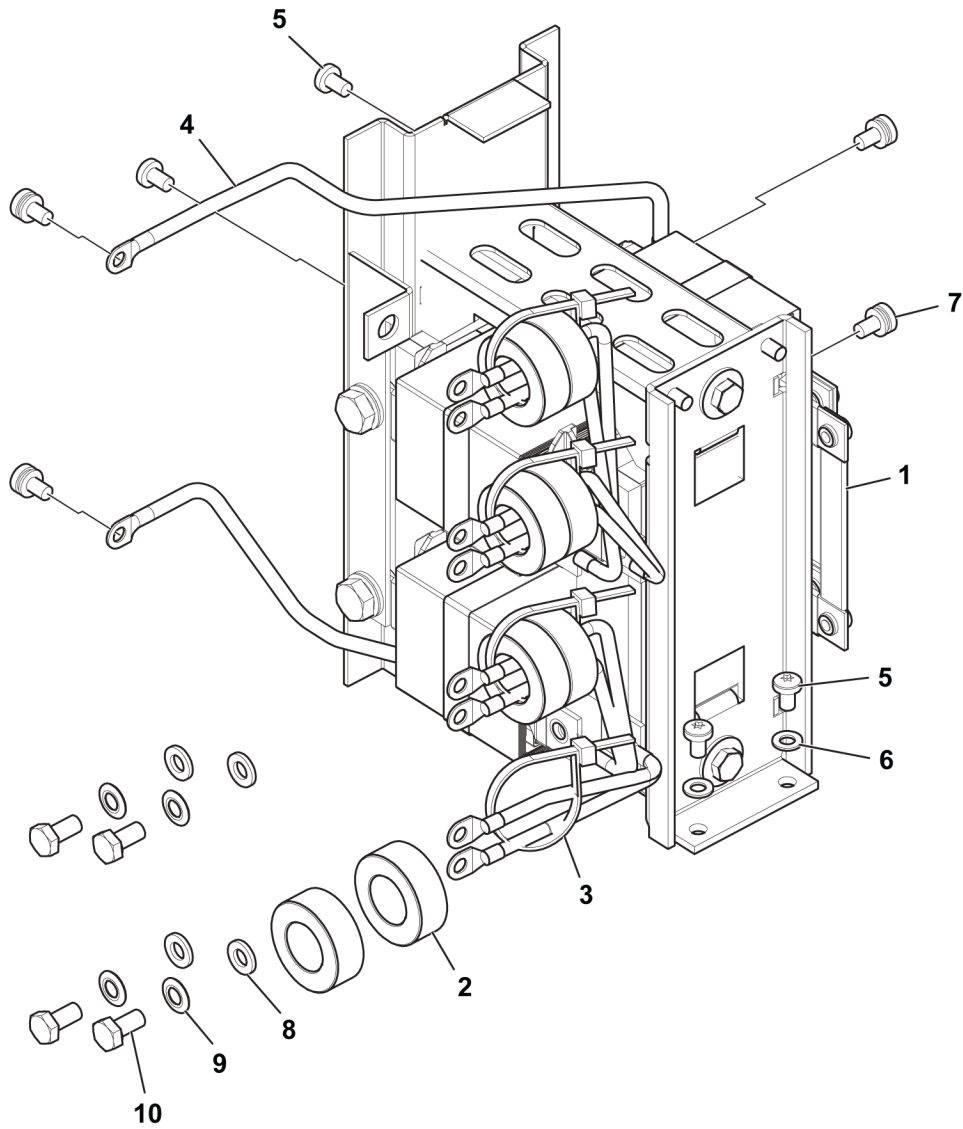
Item	Qty	Ordering no.	Denomination	Notes	C
26	1	044 620 8002	Capacitor bracket 2		
27	1	044 617 4001	Capacitor foam		
28	1	0446 214 880	Capacitor harness		
29	2		Blind rivets	D4×8	
30	2		Cable saddle	Bantam	
31	1		Harness for Warrior PCBA		

Item	Qty	Ordering no.	Denomination	Notes
301	1	0464 503 880	IGBT module kit	Including items 2, 7, 13, 19 and 21
302	1	0464 504 880	Rectifier kit	Including items 4, 21 and 22



1.4 Transformer module

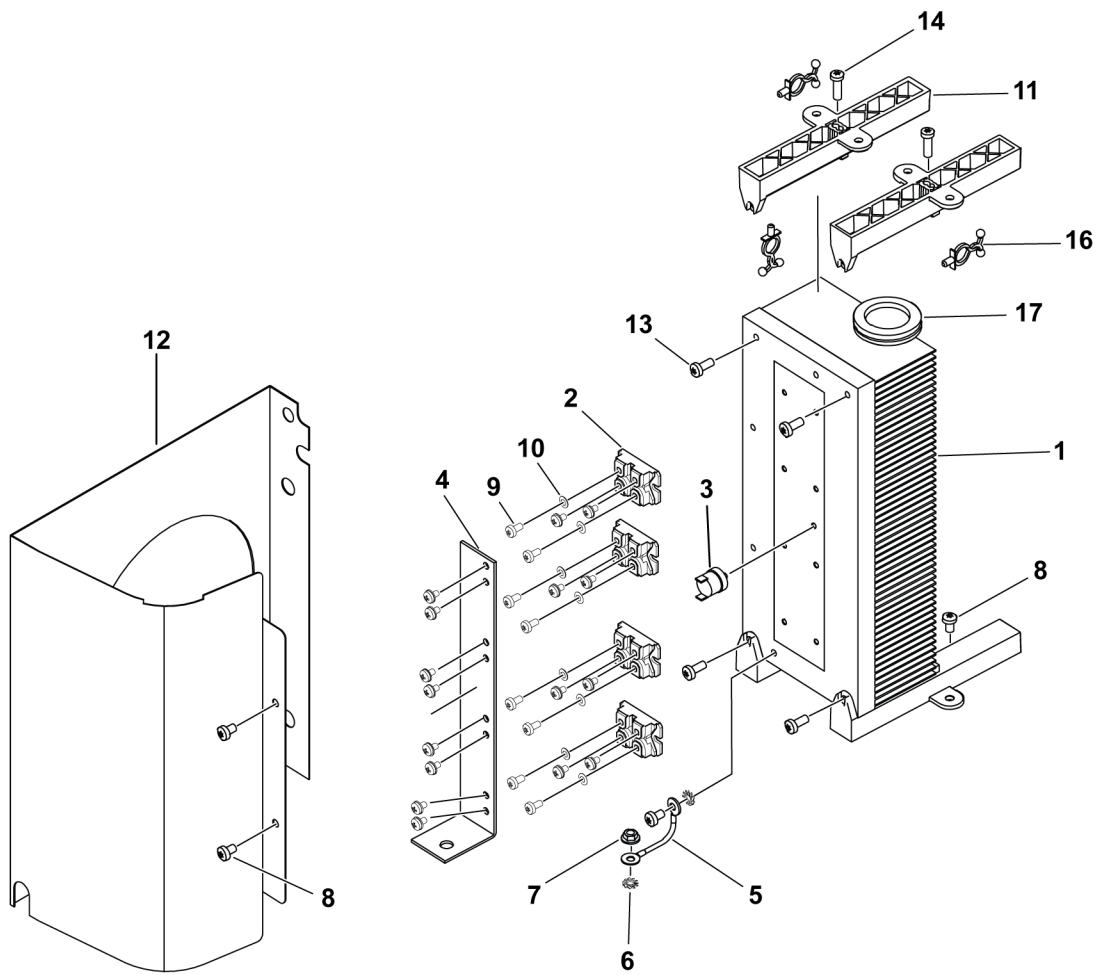
C = Component designation in the circuit diagram					
Item	Qty	Ordering no.	Denomination	Notes	C
1	1	0465 302 880	Transformer complete (7:1) 380-460 V	Only for CE, AUS & CCC versions	15T1
1	1	0465 302 881	Transformer complete (9:1) 380-575 V	Only for CSA (NA) version	
2	8	0194 034 005	Ferrite core	30×20×10	2L1,2L2, 2L3
3	4		Cable tie		
4	1	0465 287 880	Secondary rectifier harness transformer to diodes		
5	4		Screw	MRT M5×8 -8.8 FZB	
6	2		Washer	BRB 5.3 FZB	
7	4		Screw	MRT- Combi M5×10 -8.8 FZB	
8	4		Washer	BRB 6.4 FZB	
9	4		Spring washer	D11,8/6,1	
10	4		Screw	M6S M6×12 FZB	



1.5 Secondary module current brake

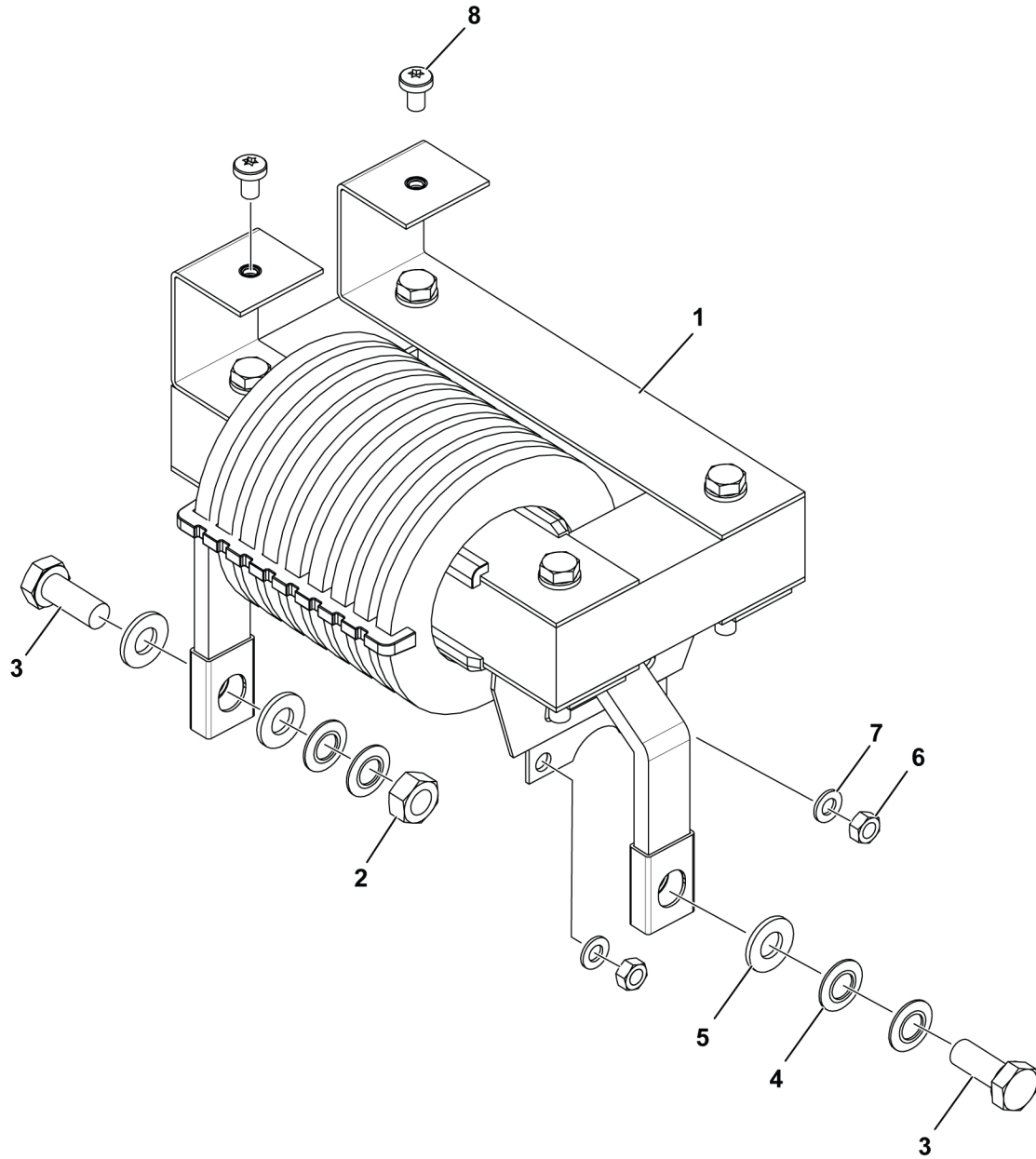
C = Component designation in the circuit diagram					
Item	Qty	Ordering no.	Denomination	Notes	C
1	1		Heat sink	Secondary side	
2	4		Diode	400 V/2 x 140 A (incl. screws), See item 301	
3	1	0465 421 886	Thermo protection cable		
4	1	0465 308 001	Copper bar		
5	1		Ground cable		
6	2		Washer	AZ 5,3	
7	1		Nut	M6MF M5	
8	5		Screw	MRT M5 x 8	
9	8		Screw	MRT M4 x 8, See item 301	
10	8		Cup spring	A-8-1, See item 301	
11	4	0465 209 001	Heat-sink support		
12	1	0465 487 003	Air duct		
13	4		Screw	MRT M5 x 12 -8.8	
14	2		Screw	REMFORM TORX 5 x 16	
15	1		Thermal compound	0.002 kg, See item 301	
16	3		Cable saddle		
17	1	0194 069 003	Grommet		

Item	Ordering no.	Description	Notes
401	0464 663 273	Diode set	Including items 2, 9, 10 and 15



1.6 Secondary inductor module

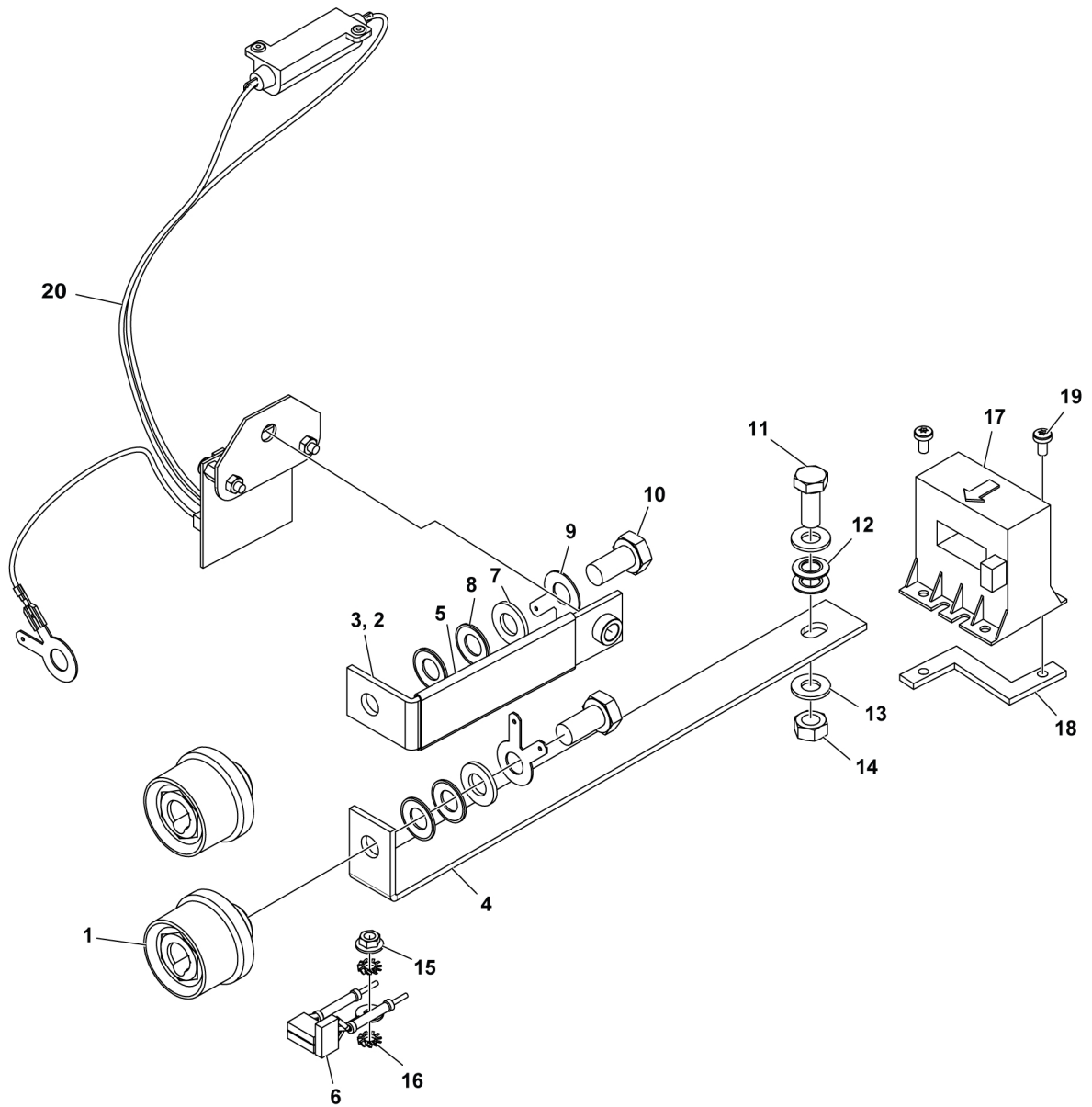
C = Component designation in the circuit diagram					
Item	Qty	Ordering no.	Denomination	Notes	C
1	1	0465 311 880	Secondary inductor	Only for CE, AUS, CCC versions	15L1
1	1	0465 311 881	Secondary inductor	Only for CSA (NA) version	
2	1		Nut	M6M, M8 Steel 8.8	
3	2		Screw	M6S, M8×20	
4	4		Cup spring	16/8.2×0.9	
5	3		Washer	BRB, 8.4 FZB	
6	2		Nut	M6M, M5 Steel 8.8	
7	2		Washer	BRB, 5.3 FZB	
8	7		Screw	MRT, M5×8-8.8 FZB	



1.7 Secondary connection module

C = Component designation in the circuit diagram					
Item	Qty	Ordering no.	Denomination	Notes	C
1	2	0160 362 881	OKC 50 cable connection female		
2	1		Rail secondary inductor	OKC, see item 501	
3	1		Nut clinching	M8, see item 501	
4	1		Rail diodes	OKC, see item 501	
5	0.09 kg		Insulation rail secondary inductor	OKC, See item 501	
6	1	0463 082 881	Capacitor complete		
7	2		Washer	BRB 10.5 FZB, see item 501	
8	4		Cup spring	M10, see item 501	
9	2		Flat pin connector	M10 6.3×0.8 (2 pin), see item 501	
10	2		Screw	M6S M10×20 -8.8 FZB, see item 501	
11	1		Screw	M6S 8×20, see item 501	
12	2		Cup spring	16/8.2, see item 501	
13	2		Washer	BRB 8.4 FZB, see item 501	
14	1		Nut	6K steel 8.8 M8, see item 501	
15	1		Nut	M6MF M5 -8.8 FZB	
16	2		Washer	AZ 5.3	
17	1	0458 063 001	Current sensor		15CS1
18	1	0465 588 001	Distance		
19	2		Screw	MRT M4×8	
20	1	0465 606 881	VRD kit rev. polarity		

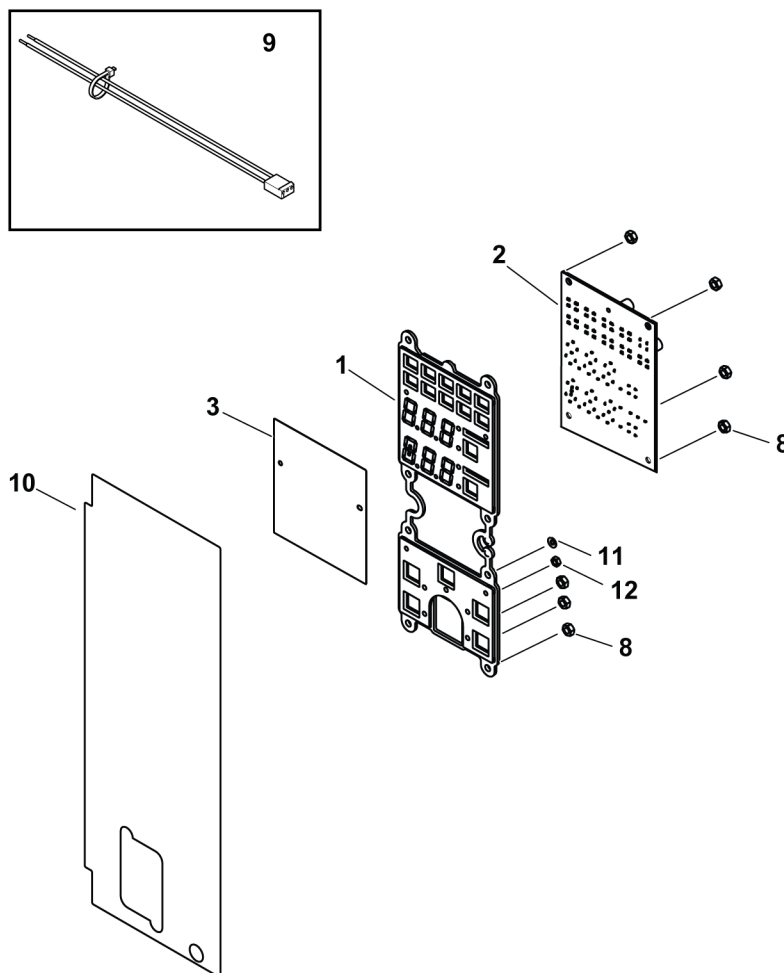
Item	Qty	Ordering no.	Denomination	Notes
501	1	0464 716 880	Secondary connection module kit	Including items 2-5, 7-14



1.8 User interface module CE

C = Component designation in the circuit diagram					
Item	Qty	Ordering no.	Denomination	Notes	C
1	1		External UI frame	See item 401	
2	1		PCBA HMI	See item 401	1AP1
3	1		PS HMI diffusor 1	See item 401	
8	7		Nut	6K STEEL 8.8 M4, See item 401	
9	1	0465 349 882	Flat cable assembly 12 POL		
10	1	0448 511 001	PS HMI overlay CX0 CE		
11	1		Washer	BRB 3,2 FZB	
12	1		Nut	6K STEEL 8.8 M3	

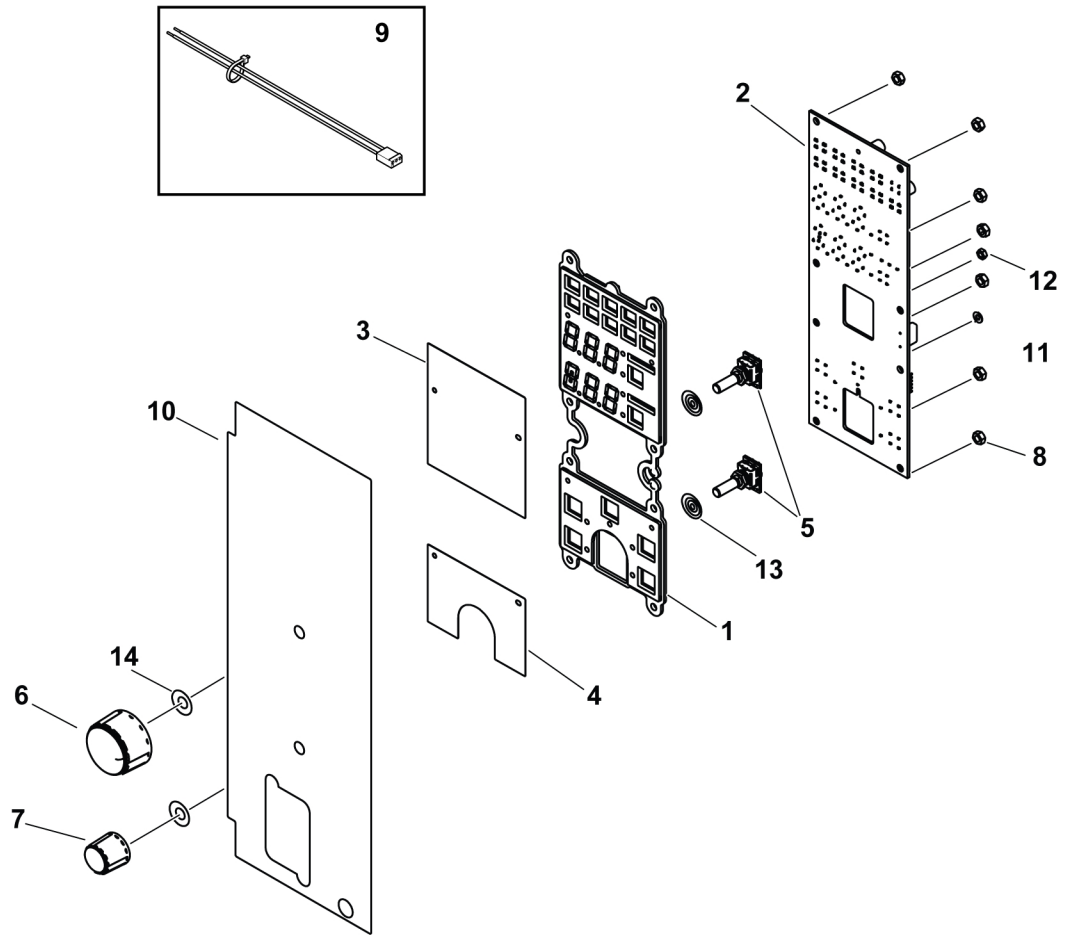
Item	Ordering no.	Description	Notes
601	0464 751 069	User interface kit CE	Including items 1, 2, 3 and 8



1.9 User interface module CSA

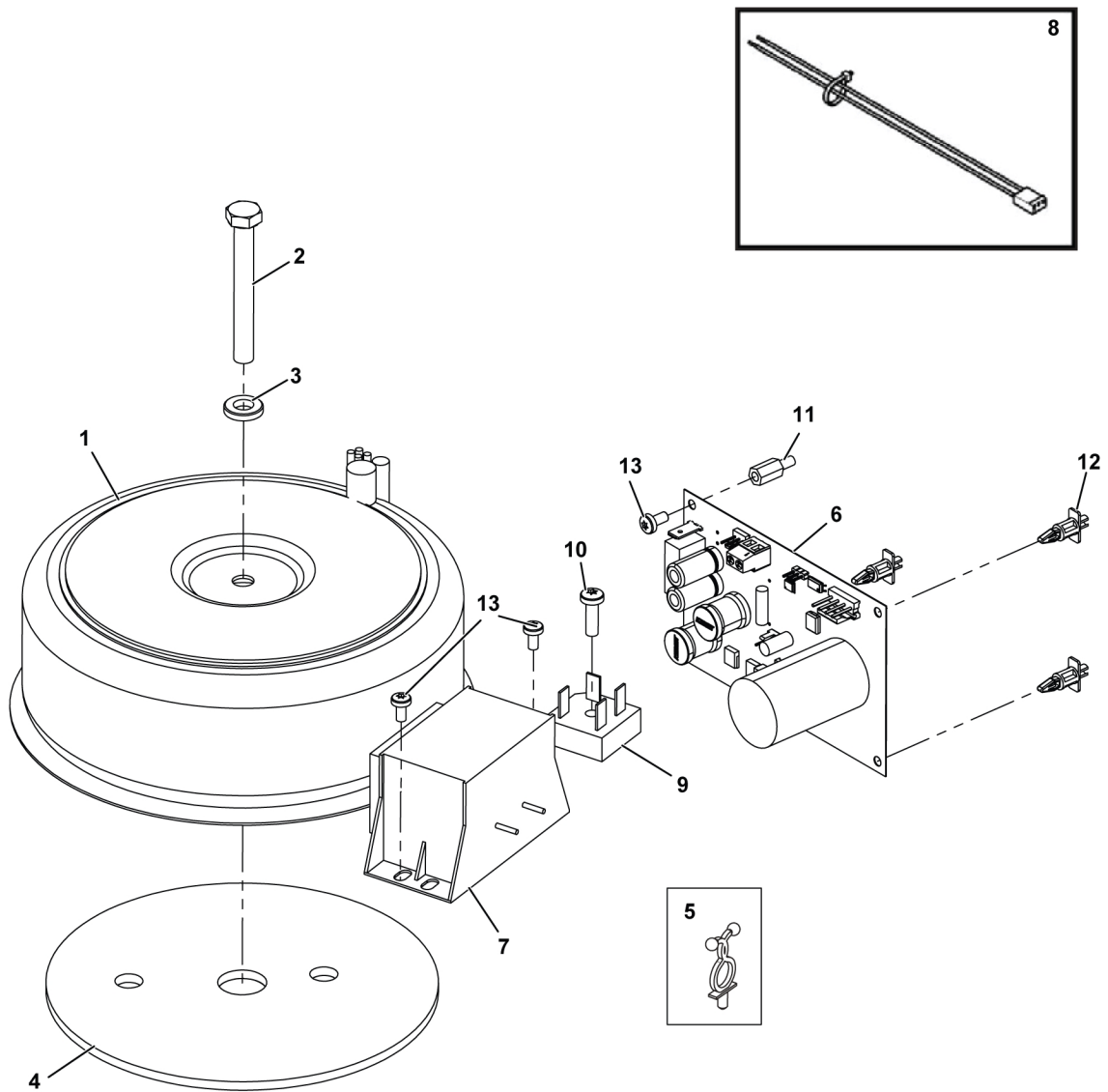
C = Component designation in the circuit diagram					
Item	Qty	Ordering no.	Denomination	Notes	C
1	1		External UI frame	See item 501	
2	1		PCBA HMI	See item 501	3AP1
3	1		PS HMI diffusor 1	See item 501	
4	1		PS HMI diffusor 2	See item 501	
5	2		Encoder harness	See item 501	
6	1	0321 475 893	Knob D36-1/4IN		
7	1	0321 475 892	Knob D21-1/4IN		
8	7		Nut	6K STEEL 8.8 M4	
9	1	0446 824 880	HMI cable harness		
10	1	0448 511 002	PS HMI overlay CX0 CSA		
11	1		Washer	BRB 3,2 FZB	
12	1		Nut	6K STEEL 8.8 M3	
13	2		Plastic insulating washer	See item 501	
14	2		Plain washer 8-200 HV-A2K	See item 501	

Item	Ordering no.	Description	Notes
701	0464 717 880	User interface kit CSA	Including items 1, 2, 3, 4, 5, 8, 13 and 14



1.10 IPS module

C = Component designation in the circuit diagram					
Item	Qty	Ordering no.	Denomination	Notes	C
1	1	0465 323 004	Aux. transformer (Only for CE, AUS & CCC versions)	Includes insulation, washer and cable	2T1
1	1	0465 323 005	Aux. transformer (Only for CSA version)	Includes insulation, washer and cable	
2	1		Screw	M6S M8×65 -8.8 FZB	
3	1		Washer	TBRB D16/8,4×3	
4	1	0465 583 001	Bracket aux. transformer		
5	4		Cable saddle		
6	1	0440 021 881	PCBA IPS board cooler		15AP2
7	1	0446 912 880	DC Choke harness		15L2
8	1	0446 473 880	Power board harness		
9	1	0194 636 002	Bridge rectifier	1000V 40A	15BR2
10	1		Screw	MRT M5×16 Black	
11	1		Spacer screw	M4×12	
12	3		Spacer	9.5 mm	
13	3		Screw	MRT M4×8	

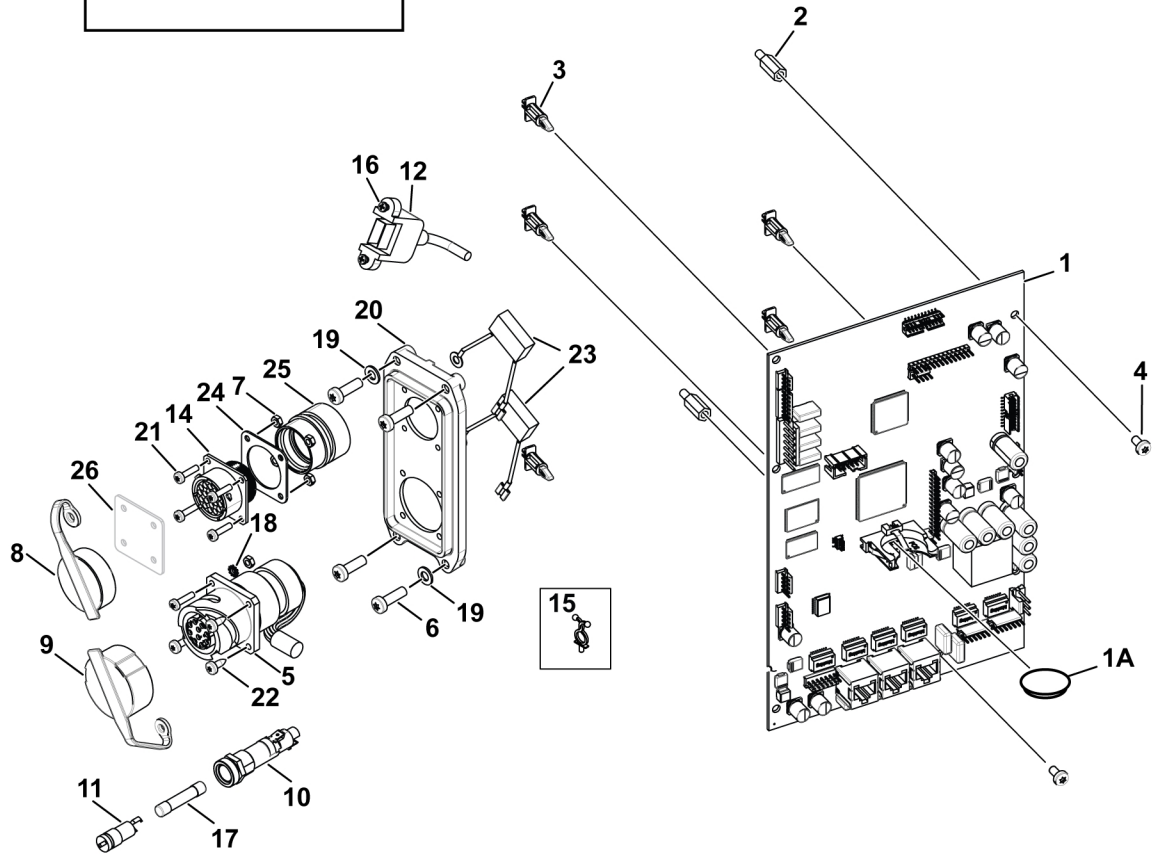
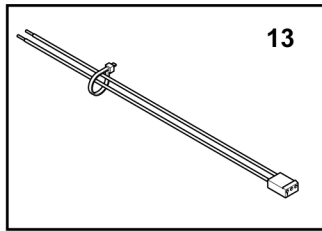


1.11 Control module

C = Component designation in the circuit diagram					
Item	Qty	Ordering no.	Denomination	Notes	C
1	1	0464 751 057	Control Board, CXI, CE	0448 500 880	20AP1
		0464 751 058	Control Board, CXII, CE	0448 500 881	
		0464 751 059	Control Board, CXI, CSA	0448 500 883	
		0464 751 060	Control Board, CXII, CSA	0448 500 884	
		0464 751 061	Control Board, CXII, AUS	0448 500 886	
		0464 751 062	Control Board, CXII, CCC	0448 500 887	
1A			Lithium coin battery CR2450	Manganese dioxide CR2450 3V 620 mAh (part of control board)	
2	2		Spacer screw	M4X15	
3	5		Spacer	12.7 mm	
4	2		Screw	MRT M4X8	
5	1	0446 471 881	Chassis connector harness		
6	4		Screw	REMFORM TORX 5 x 16 BLACK	
7	5		Nut	6K STEEL 8.8 M3	
8	1	0446 843 001	Protection cap	25,4 only for CSA	
9	1	0446 844 001	Protection cap	30,8	
10	1		FEU panel mount 3AG fuse holder	See item 601	
11	1		FEU, FAU, FAC fuse holder cap	See item 601	
12	1	0445 847 880	USB complete		
13	1	0465 329 880	Flat cable assembly	20 pole	
14	1		Remote connector harness	Only for CSA, see item 602	
15	3		Cable saddle		
16	2		Screw	MRT M2,5 x 12	
17	1		ACDC fuse	10 A 250 V SUT-H	
18	1		Washer	AZ 3,2	
19	1		Washer	BRB 5,3 FZB	
20	1	0447 028 001	Connector plastic adapter		
21	5		Screw	MRT M3 x 12	
22	3		Screw	RTS ST3,5 x 9,5	
23	1	0467 911 884	Capacitor		
24	1		Peripheral grounding plate		
25	1		Backshell shrinkboot adapter	Only for CSA, see item 602	
26	1	0448 507 001	Remote connector led	Only for CE	

1 SPARE PARTS

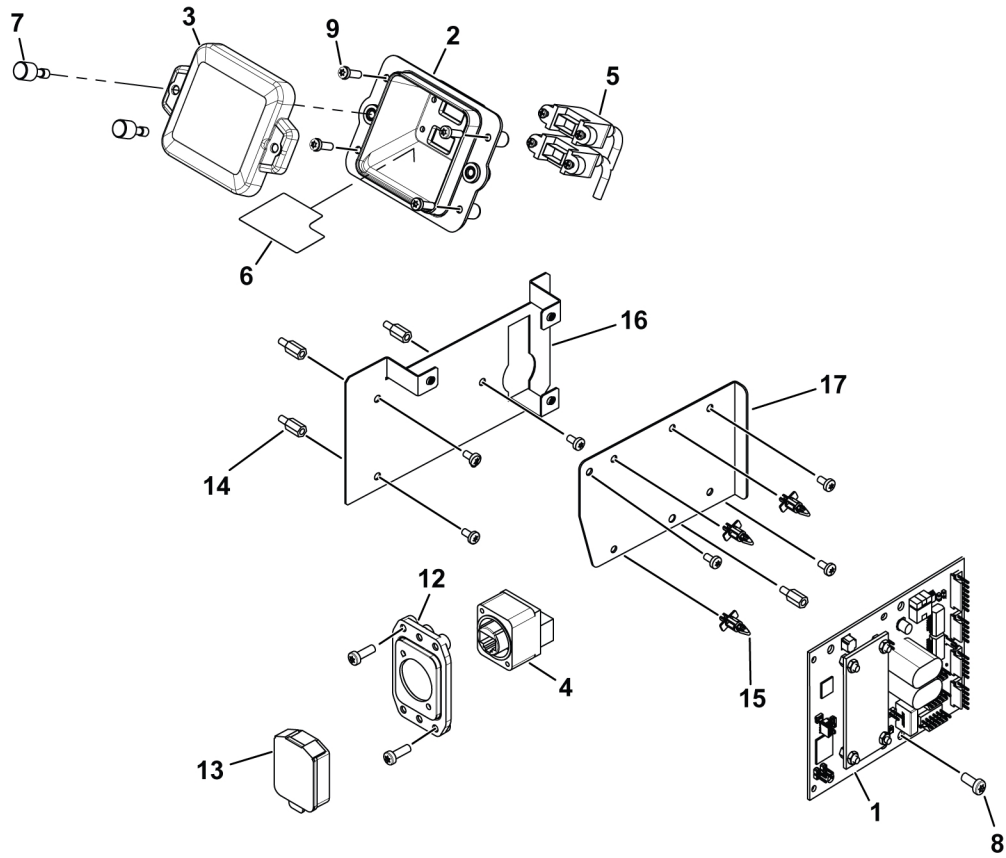
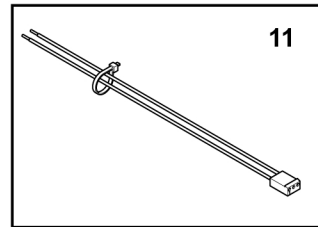
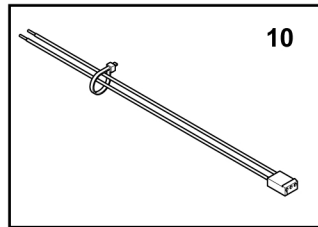
Item	Ordering no.	Description	Notes
801	0464 718 880	FEU fuse holder kit	Including items 10 and 11
802	0464 663 122	Remote connector kit	Including items 14, 21, 24, 7 and 25



1.12 IoT module

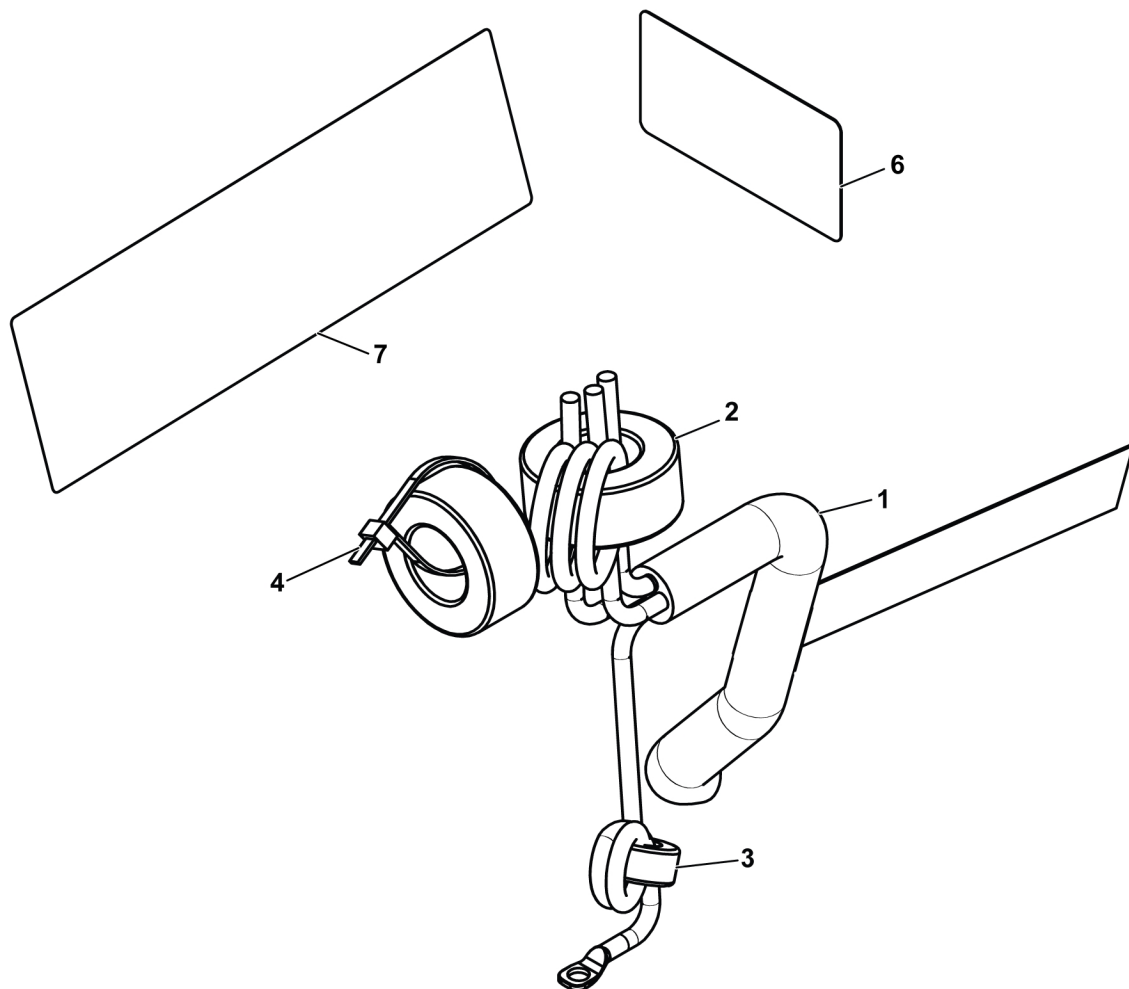
C = Component designation in the circuit diagram					
Item	Qty	Ordering no.	Denomination	Notes	C
1	1	0440 515 880	IoT PCBA		25AP1
2	1		USB bay	See item 701	
3	1		Lid for USB	See item 701	
4	1	0465 795 001	Ethernet connector		
5	2	0445 847 881	USB complete		
6	1		Gateway decal (USB)	See item 701	
7	2		Thumb screw	See item 701	
8	7		Screw	MRT M4 x 8	
9	6	0194 153 292	Screw	Remform TORX 4 x 12 black	
10	1	0446 822 882	Cable harness IoT GW		
11	1	0446 872 880	Ethernet cable harness		
12	1	0447 018 002	Ethernet connector adapter		
13	1	0465 796 001	Protective cap and seal		
14	4		Spacer screw	M4 x 12	
15	3		PCB spacer		
16	1	0448 514 880	lot mounting bracket assy		
17	1	0448 515 001	Shielding bracket IoT PCBA		
18	1		Self clinching nut		

Item	Ordering no.	Description	Notes
901	0464 723 880	Gateway USB kit	Including items 2, 3, 6 and 7



1.13 Market specific module

C = Component designation in the circuit diagram					
Item	Qty	Ordering no.	Denomination	Notes	C
1	1	0468 516 895	Mains cable (Only for CE & AUS versions)		
1	1	0468 516 905	Mains cable 4×10 AWG (Only for CSA version)		
1	1	0468 516 904	Mains cable 4×6 mm ² (Only for CCC version)		
1A	1	0349 891 208	Plug	Only for CE & AUS versions	
2	2	0194 034 003	Ring core ferrite		
3	1	0349 312 063	Ring core ferrite		
4	1		Cable tie		
6	1	0465 515 003	Decals mains voltage setting	Only for CE, CCC & AUS	
6	1	0465 515 001	Decals mains voltage setting	Only for CSA	
7	1	0465 419 004	Warning decal power source	Only for CSA	





A WORLD OF PRODUCTS AND SOLUTIONS.



For contact information visit esab.com

ESAB AB, Lindholmsallén 9, Box 8004, 402 77 Gothenburg, Sweden, Phone +46 (0) 31 50 90 00

manuals.esab.com

